

Midlands Connect Strategy: Powering the Midlands Engine

March 2017



Midlands Connect
Powering the Midlands Engine





Sir John Peace

Chairman of Midlands Engine
and Midlands Connect

Foreword

I am honoured to introduce the Midlands Connect Strategy, which outlines this region's vision to become an engine for growth through investment in transport infrastructure for this generation and the next.

With this strategy we aim to improve the quality of life for those living in the Midlands as well as attract even more international businesses to the region. We believe that investing in this region's transport can benefit the whole country and create a positive ripple effect to boost the development of industry, skills and housing.

This strategy is designed to secure further infrastructure funding needed to lay the groundwork for improved connectivity across the Midlands, bringing the East and West closer together and opening the region's businesses to the world.

With Brexit on the horizon, Midlands Connect is vital to meeting the challenge of helping our regional economy flourish by securing further investment in our transport network, allowing our businesses to become more efficient and boost our export potential.

We are speaking with one voice - the level of collaboration between our business and civic leaders to create this paper is unrivalled.

If this strategy is fully realised the Midlands, together with Government, has an opportunity to use HS2 as a catalyst for growth. We can deliver a once in a generation opportunity for long-term economic success not just for us here, in the Midlands Engine, but across the UK.



The Midlands Connect Partnership

The Midlands
is home to



6m jobs

and our companies
export to



Midlands Connect is a pan-Midlands partnership of local transport authorities, local enterprise partnerships, local business representatives, and the Department for Transport with its key delivery bodies which now forms the transport component of the Midlands Engine for Growth.

The Midlands is the largest economic area outside of London. It attracts more inward investment and creates more start-up businesses than anywhere in the UK outside of the capital. It is already home to six million jobs and our companies export to 178 countries.



Exports

16% of all UK
exports worth **£50
billion** a year



Air Travel

Birmingham Airport -
1 of just 7 in the
UK to serve more
than **10 million**
passengers a year



Air Freight

East Midlands Airport -
the **UK's biggest** pure
freight airport outside
of Heathrow



Road Freight

33% of British heavy
road freight goes
to/from/through
the Midlands



Manufacturing

1/3 of all UK
manufacturing jobs



Rail Freight

4/5 main UK rail
freight routes
serve the Midlands

Outcomes



Globally:

Leading the UK in
the global Market



Nationally:

Powering the
UK Economy



Regionally:

Firing up the
Midlands Engine

Connected



HS2:

Getting the Midlands
HS2 Ready



Intelligently:

Leading the
technology Revolution



Resiliently:

Moving the nation's freight

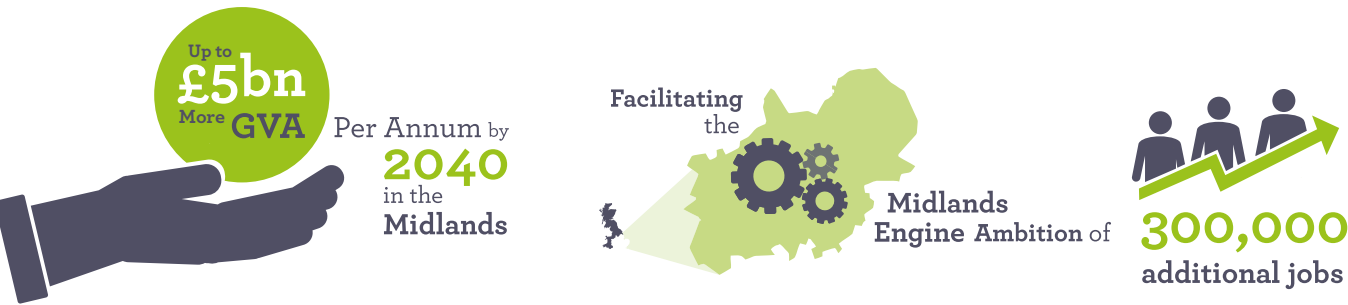
Whilst the Midlands economy is strong it is not reaching its full potential. Our early analysis demonstrated that if we can improve transport connectivity between towns and cities within the Midlands and with key centres elsewhere, then we could boost economic growth to the benefit of both the Midlands and UK plc.

The Midlands Connect Strategy sets out our proposals for how we can start to turn some of this untapped economic potential into real growth: more and better jobs for local people, more trade and investment for local companies, and more opportunities for businesses to expand and communities to thrive.

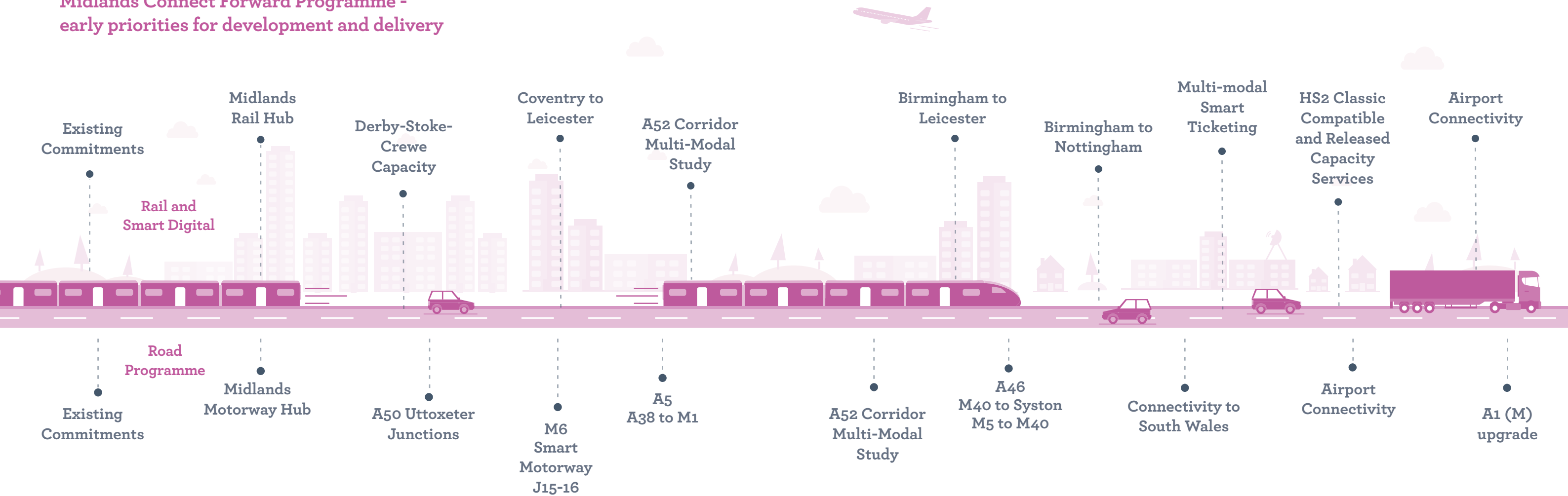
The Case for Investment

Our initial analysis suggests that every £1 invested in the Midlands Connect Strategy will deliver at least £2 of economic benefits. As we work up specific proposals in more detail, we fully expect the economic benefits to increase substantially.

Our strategy will boost the economy by:



Midlands Connect Forward Programme - early priorities for development and delivery



Our Programme

Midlands Connect is empowered by Government to take forward our 20-30 year investment programme. Almost all the strategic road and rail enhancements that will be delivered up to 2020 have already been decided. Our early priorities therefore focus on ensuring the delivery of key Midlands’ schemes already within the investment programmes of Highways England and Network Rail, and developing business cases for interventions that can start to be delivered in the period 2020-2025.

Our strategy will maximise the potential of technology to get the best of our existing networks and enhance

the travelling experience. This will be important to realise benefits sooner and to reduce the potential scale of future capital investment.

Wider than our infrastructure proposals we recognise the need to develop a Major Roads Network for the Midlands that will underpin future economic growth that will form part of our forward work programme.

Alongside this our governance will mature as we develop our longer term role for Midlands Connect in ensuring that we realise our full economic potential.



Midlands Connect
Powering the Midlands Engine

Midlands Connect

16 Summer Lane, Birmingham, B19 3SD

✉ MCAdmin@midlandsconnect.uk

➡ www.midlandsconnect.uk

🐦 [@MidsConnect](https://twitter.com/MidsConnect)